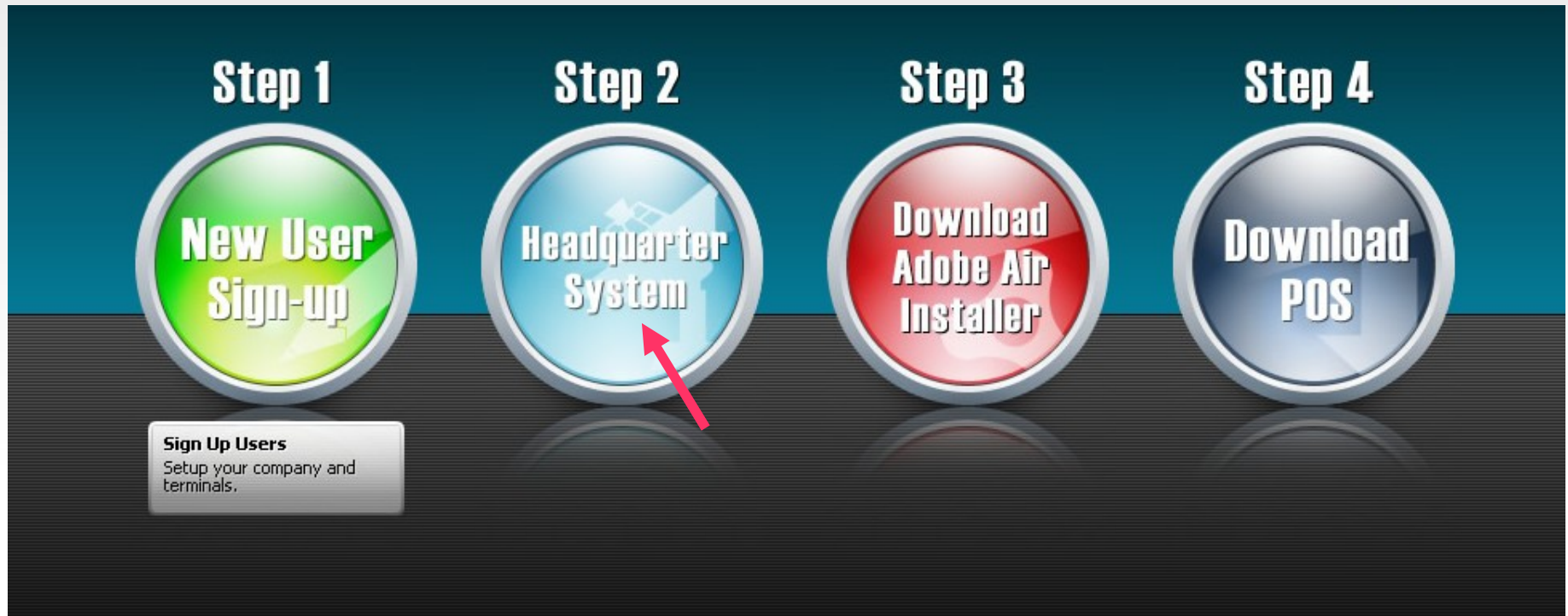


AUDIT TRAIL

WALKTHROUGH

Access the WebPOS home page (URL <http://www.alliancepos.net>) and click on Headquarter System.



Go to Maintenance > Audit Trail

Home Daily Operation Sales Report Inventory Master Records **Maintenance** Logout

Sales Dashboard

Branch: **(All)** Date: 02/21/2012 Panel:

Report: **Sales Trend** Period: **Jan 22 - Feb 21, 2012**

Refresh every (mins):

Revenue: **(Base Product)**

- POS Terminal
- Company Information
- Security Access
- Audit Trail
- Upload Master Data
- Change Password
- User Account
- Help Desk Support
- Local Options

Go to Maintenance > Audit Trail

Audit Trail

Period:  - 

Sort: **Newest** ▼

Resource: **(All)** ▼

Mode: **(All)** ▼

Updated By:

Memo:

Set the **Period** filter.

Sort by Newest or Oldest data.

Resource - data accessed

Mode - type of access: add, edit or delete

Updated By - enter an account to see all the items he/she has accessed

This report can be viewed in PDF and Excel formats. To email, click on the Email button (see How to Send Reports)

Audit Trail

Previous
1-100 of 137

Time Stamp	Resource	Mode	Updated By	Memo
02/21/2012 10:41 AM	HQ	LOGON	KLEE@ASI-EES.COM	User ID: KLEE@ASI-EES.COM
02/21/2012 9:48 AM	HQ	LOGON	KLEE@ASI-EES.COM	User ID: KLEE@ASI-EES.COM
02/21/2012 8:37 AM	HQ	LOGON	T_LUNA@ALLIANCE.C	User ID: T_LUNA@ALLIANCE.COM.PH
02/20/2012 11:38 AM	HQ	LOGON	KLEE@ASI-EES.COM	User ID: KLEE@ASI-EES.COM
02/20/2012 11:20 AM	Product Master	EDIT	KLEE@ASI-EES.COM	[Key] CEL09176208130 [fwarranty_duration] 1 -> 3
02/20/2012 11:09 AM	HQ	LOGON	KLEE@ASI-EES.COM	User ID: KLEE@ASI-EES.COM
02/20/2012 10:34 AM	HQ	LOGON	T_LUNA@ALLIANCE.C	User ID: T_LUNA@ALLIANCE.COM.PH
02/20/2012 9:28 AM	Product Master	ADD	KLEE@ASI-EES.COM	[Key] 1234567
02/20/2012 9:26 AM	Product Master	ADD	KLEE@ASI-EES.COM	[Key] N3119
02/20/2012 8:58 AM	HQ	LOGON	KLEE@ASI-EES.COM	User ID: KLEE@ASI-EES.COM
02/20/2012 8:40 AM	Upsell	EDIT	KLEE@ASI-EES.COM	[Key] Valentines Day Promo [fedate] 20120215 -> 20120221
02/20/2012 8:25 AM	HQ	LOGON	KLEE@ASI-EES.COM	User ID: KLEE@ASI-EES.COM
02/17/2012 5:15 PM	HQ	LOGON	KLEE@ASI-EES.COM	User ID: KLEE@ASI-EES.COM
02/17/2012 2:06 PM	HQ	LOGON	KLEE@ASI-EES.COM	User ID: KLEE@ASI-EES.COM
02/17/2012 9:53 AM	HQ	LOGON	KLEE@ASI-EES.COM	User ID: KLEE@ASI-EES.COM
02/16/2012 5:11 PM	HQ	LOGOUT	KLEE@ASI-EES.COM	User ID: KLEE@ASI-EES.COM
02/16/2012 5:08 PM	Upsell	EDIT	KLEE@ASI-EES.COM	[Key] Valentines Day Dining Promo [fedate] 20120215 -> 20120229
02/16/2012 5:06 PM	Product Master	ADD	KLEE@ASI-EES.COM	[Key] ALA
02/16/2012 5:05 PM	Product Master	ADD	KLEE@ASI-EES.COM	[Key] RULER

PDF
Excel
Email
Refresh
Close